

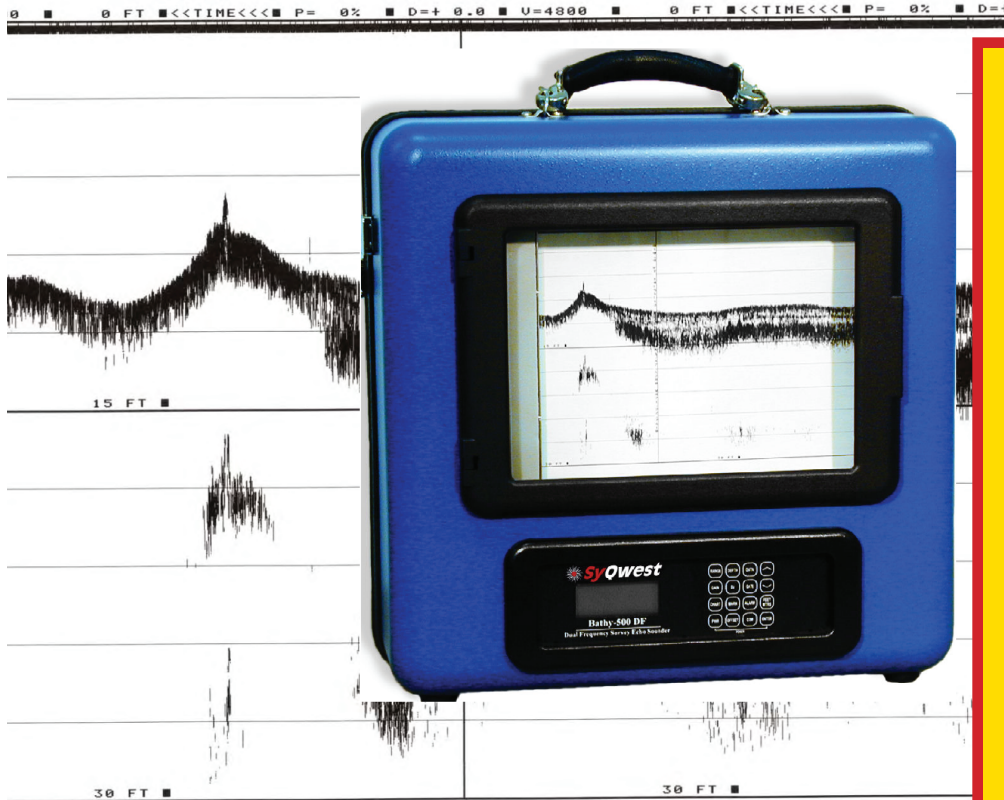
 **SyQwest Incorporated**

# **Bathy 500 HD™** **Survey Echo Sounder**

The Bathy 500 HD™ is a state-of-the-art electronic survey instrument used to generate precision chart recordings and digital data output. Low power consumption, portability, ease of use, rugged construction, and built in communication interfaces for navigation/data logging devices make the Bathy 500 HD™ the ideal solution for shipboard surveys.

**NEW IMPROVED DESIGN**

*The sensor unit is extremely compact, interfaces directly to a standard laptop PC and comes complete with a light-weight and efficient acoustic transducer and integrated thermal printer.*



## **NEW FEATURES!!!**

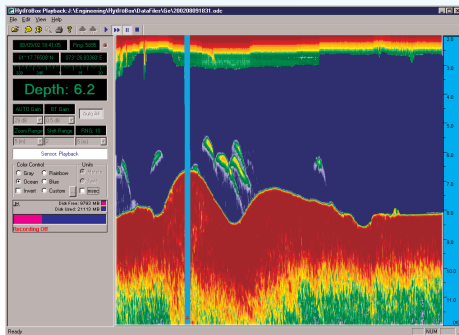
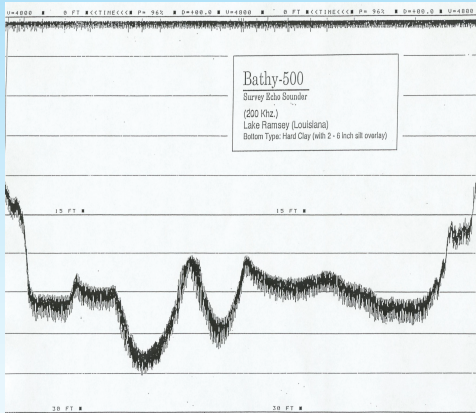
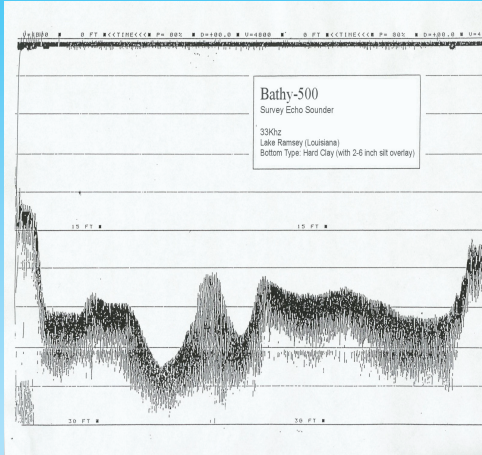
- ◆ CW & FM Chirp
- ◆ Realtime HD Data Storage (16 bit, 96kHz, SEG-Y Format)
- ◆ Internal Removable HD Memory Storage (32 GB SD Flash Card)
- ◆ Single Channel Option (33kHz, 50kHz, or 210kHz)
- ◆ Simultaneous Dual Channel Option (33/210 kHz or 50/210 kHz)
- ◆ TVG and DC Gain Steps (1dB)
- ◆ Windows PC Playback Application
- ◆ Ethernet Link to PC Application (RJ-45)

- ◆ Geographic Position Input;NMEA Compatible ◆ Depth Accuracy +/- 0.1%
- ◆ Hypack & HydroPro Compatible
- ◆ Data Storage & Playback ◆ Zoom Modes ◆ Event Marks ◆ Sound Velocity
- ◆ Draft ◆ Low Input Power ◆ SEG-Y Output

 **SyQwest inc**

30 Kenney Drive / Cranston, RI 02920  
Tel: (401) 432-7129 Fax: (401) 432-7029  
Email: sales@syqwestinc.com Web: www.syqwestinc.com

# Bathy 500 HD™



## SPECIFICATIONS

<b>Units:</b>	<b>Feet or Meters</b>
<b>Depth Ranges:</b>	<b>0-15, 30, 60, 120, 240, 480, 960, 1920 Ft. 0-5, 10, 20, 40, 80, 160, 320, 640 Meters. Auto-ranging Modes in all units.</b>
<b>Draft Offset:</b>	<b>0 to 30 feet (10 meters)</b>
<b>Manual Gates:</b>	<b>Shallow &amp; Deep, (0.1 ft / 0.1mt resolution)</b>
<b>Shift Range:</b>	<b>1 foot (1meter) increments to bottom of selected range</b>
<b>Zoom Range:</b>	<b>15, 30, 60, 120, 240 feet 5, 10, 20, 40, 80 meters</b>
<b>Zoom Modes:</b>	<b>Bottom Zoom, Bottom Lock, Marker Zoom, Zoom (Playback Only)</b>
<b>Display:</b>	<b>Normal Data, Zoom Data, Selectable Color Palette</b>
<b>Depth Resolution:</b>	<b>0.1 feet (0.1 meters)</b>
<b>Depth Accuracy:</b>	<b>+/-0.5% of depth</b>
<b>Sound Velocity:</b>	<b>4600 - 5250 ft/sec (1400 - 1600 mt/sec) 1 mt/sec int.</b>
<b>Navigation Input:</b>	<b>NMEA 0183, GLL, GGA, RMC, VTG, VHW, HDT. Selectable Baud Rate, RS-232 .</b>
<b>Data Output:</b>	<b>NMEA 0183; DPT, DBT, PMC; ODEC</b>
<b>Bathy 500 I/F:</b>	<b>Ethernet via RJ-45</b>
<b>Printer :</b>	<b>Integrated Thermal Printer</b>
<b>Heave Input:</b>	<b>TSS1 Format, 9600 Baud Rate</b>
<b>Shallow Water Operation:</b>	<b>&lt;2.5 meters; bottom type dependent</b>
<b>Transmit Rate:</b>	<b>Up to 10 Hz, depth and operator mode dependent.</b>
<b>Eventing:</b>	<b>Manual, Periodic, External (user selectable)</b>
<b>Frequency Output:</b>	<b>33kHz, 50kHz, 210kHz</b>
<b>Data File Storage:</b>	<b>External- ODEC Format(8 bit, 800 pixel), SEG-Y Format envelope (16 bit, 96kHz rate), Internal-32 GB SD Flash.</b>
<b>Data File Playback:</b>	<b>Files played back and printed at Normal, Rapid Advance ,or Scroll Bar, with Pause and Zoom</b>
<b>Transmit Output Power:</b>	<b>300 Watts (pulsed), 1000 Watts capable</b>
<b>Input Power:</b>	<b>110-220 VAC, 10-30 VDC, Nominal Power 20 watts, Reverse Polarity and Over Voltage Protected.</b>
<b>Dimensions:</b>	<b>22.9 cm (9") Depth, 44.5 cm (17.5") Width, and 48.3 cm ( 19") Height. (sensor unit only)</b>
<b>Weight:</b>	<b>16 kg (35 lbs). (sensor unit only)</b>
<b>Environmental:</b>	<b>25°C to +60°C Operating Temperature (-55°C to +90°C Storage) Water Resistant EMC meets EN60945 Emissions,CE Compliant</b>

### Options:

- Over The Side Mount Kit
- 33kHz, 50kHz, or 210kHz
- Dual Frequency Operation
- SonarWiz
- Hypack